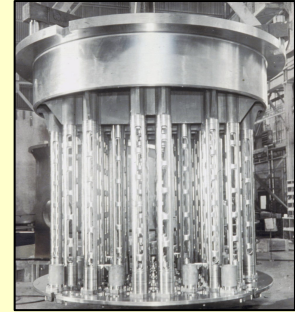
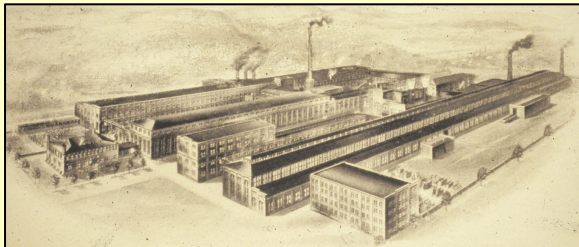


Precision Custom Components



Renaissance Ready ...Over 50 years of Nuclear Experience

PCC began over 100 years ago manufacturing energy related equipment for government and commercial customers. For over 50 years, PCC has produced nuclear primary system components beginning with the reactor internals for the Shippingport Project. Today, PCC is a major domestic supplier to the Commercial Nuclear Industry, National Laboratories, Department of Energy and Department of Defense.



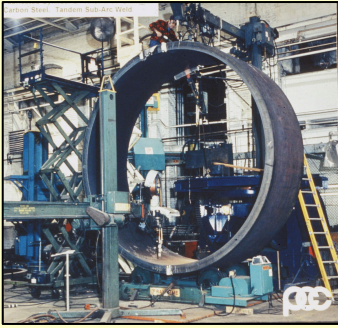
ORGANIZATION

PCC, in York, Pennsylvania, has the infrastructure to support the most complex and high quality projects. In addition to a DCAA approved cost accounting system, PCC maintains a Quality Management System that meets or exceeds NQA-1 and ISO-9001. Our systems have been fully approved by utilities, government and commercial

customers. PCC has ASME Code Certifications for both Section III and VIII components. Our staff includes graduate Design, Mechanical, Industrial, Materials, Welding and Quality Engineers. This highly technical staff understands the nuclear industry and the demanding levels of quality and safety. PCC is one of the few full service domestic manufacturing organizations that can demonstrate this attribute. The continuous 50-year nuclear culture is inter-woven throughout the PCC organization.

EXPERIENCE AND CAPABILITIES

PCC's engineers and craftsman have an average of 30 years in the design and manufacture of nuclear system components. Material selection, machining, welding, inspection and testing are integral to the culture of PCC and its people. This staff is our strength in understanding customer needs and meeting the demanding requirements of the nuclear industry. We are proud of our culture, experience and successes.



Our relevant nuclear experience includes:

- ✓ Reactor Vessels
- ✓ Closure Heads
- ✓ Reactor Internals
- ✓ Pressurizers
- ✓ Steam Generators
- ✓ Accumulator Tanks
- ✓ Core Support Structures
- ✓ Spent Fuel Casks
- ✓ Refueling Equipment



FACILITY

- ✓ 270,000 Square Feet (under roof)
- ✓ Over 150-ton Crane Capacity
- ✓ 22 Vertical & Horizontal Boring Mills
- ✓ 4 mev X-Ray Facilities
- ✓ Materials Laboratories
- ✓ Inspection and Clean Rooms
- ✓ Laser Tracking Equipment
- ✓ Rail and Truck Access

POINTS OF CONTACT

Jim Stouch
PCC Marketing Department
P.O. Box 15101, York, PA 17405
(717) 848-1126, Ext. 2362
www.pcc-york.com

REPRESENTATIVE CUSTOMERS

- ✓ AREVA
- ✓ Brookhaven Laboratory
- ✓ BWXT
- ✓ Department of Energy
- ✓ Department of Defense
- ✓ Dominion Resources
- ✓ Exelon
- ✓ Fort St. Vrain
- ✓ General Atomics
- ✓ General Electric
- ✓ Lawrence Livermore
- ✓ Los Alamos
- ✓ Northern States Power
- ✓ Nuclear Fuel Transport
- ✓ Princeton Tokamak
- ✓ SMUD
- ✓ Thomas Jefferson Laboratory
- ✓ Westinghouse
- ✓ Wisconsin Electric

Why Select PCC?

- Proven Nuclear experience
- 50 Year Nuclear Culture
- U.S. Based Operations
- Qualified Engineers & Craftsmen
- NQA-1 Program
- ASME "N" Stamps
- Complete Manufacturing Capabilities